

Sponsored by
The Maryland Developmental Disabilities Council
and
The Arc Maryland
2016



A series of webinars providing the tools, information, and ideas for people with developmental disabilities and families to improve quality of life and effect change. *Building the Future, Now!* is a collaboration between the Maryland Developmental Disabilities Council and The Arc Maryland.



- September 21: Everything You Wanted to Know about DDA, but Were Afraid to Ask.
- October 20: So You're Approved for DDA Services – What's Next?
- November 10: Employment First: New Opportunities, Dispelling Myths & Misconceptions

GoToWebinar Housekeeping: Attendee Participation

Your Participation

Join audio:

- Choose “Telephone” and dial using the information provided
- Choose “Mic & Speakers” to use VoIP

To open question panel, click on the red bar with the arrow. Type your questions in the Questions Panel – they will be answered at the end of the presentation.

Note: Today’s presentation is being recorded and is closed captioned. It will be provided within 48 hours.

Click here to open question panel.

The screenshot displays the GoToWebinar interface. At the top, there is a menu bar with 'File', 'View', and 'Help'. Below this, there are two main panels: 'Audio' and 'Questions'. The 'Audio' panel is highlighted with a red border and contains options for 'Telephone' and 'Mic & Speakers' (with a 'Settings' link). A 'MUTED' indicator and a volume slider are also present. The 'Questions' panel is also highlighted with a red border and contains a text input field with the placeholder '[Enter a question for staff]' and a 'Send' button. A purple circle highlights a red button with a white arrow pointing right, which is used to open the questions panel. A purple arrow points to this button from the text 'Click here to open question panel.' above. At the bottom of the interface, the text 'Webinar Housekeeping' and 'Webinar ID: 275-918-366' is displayed, along with the 'GoToWebinar' logo.

Presenters



Patricia Sastoque

Deputy Director of Programs, The Developmental Disabilities Administration
patricia.sastoque@maryland.gov



Cristy Marchand

Executive Director, The Arc Maryland
cmarchand@thearcmd.org



Joyce Sims

Executive Director, Resource Connections
jsims@resconnect.org

Everything You Wanted to Know about DDA, but Were Afraid to Ask

AGENDA

An Overview of the Developmental Disabilities Administration (DDA)



Patricia Sastoque, Deputy Director of Programs, DDA

Waiting List Essentials



Cristy Marchand, Executive Director, The Arc Maryland

Eligibility 101



Joyce Sims, Executive Director, Resource Connections

Q and A



The Developmental Disabilities Administration

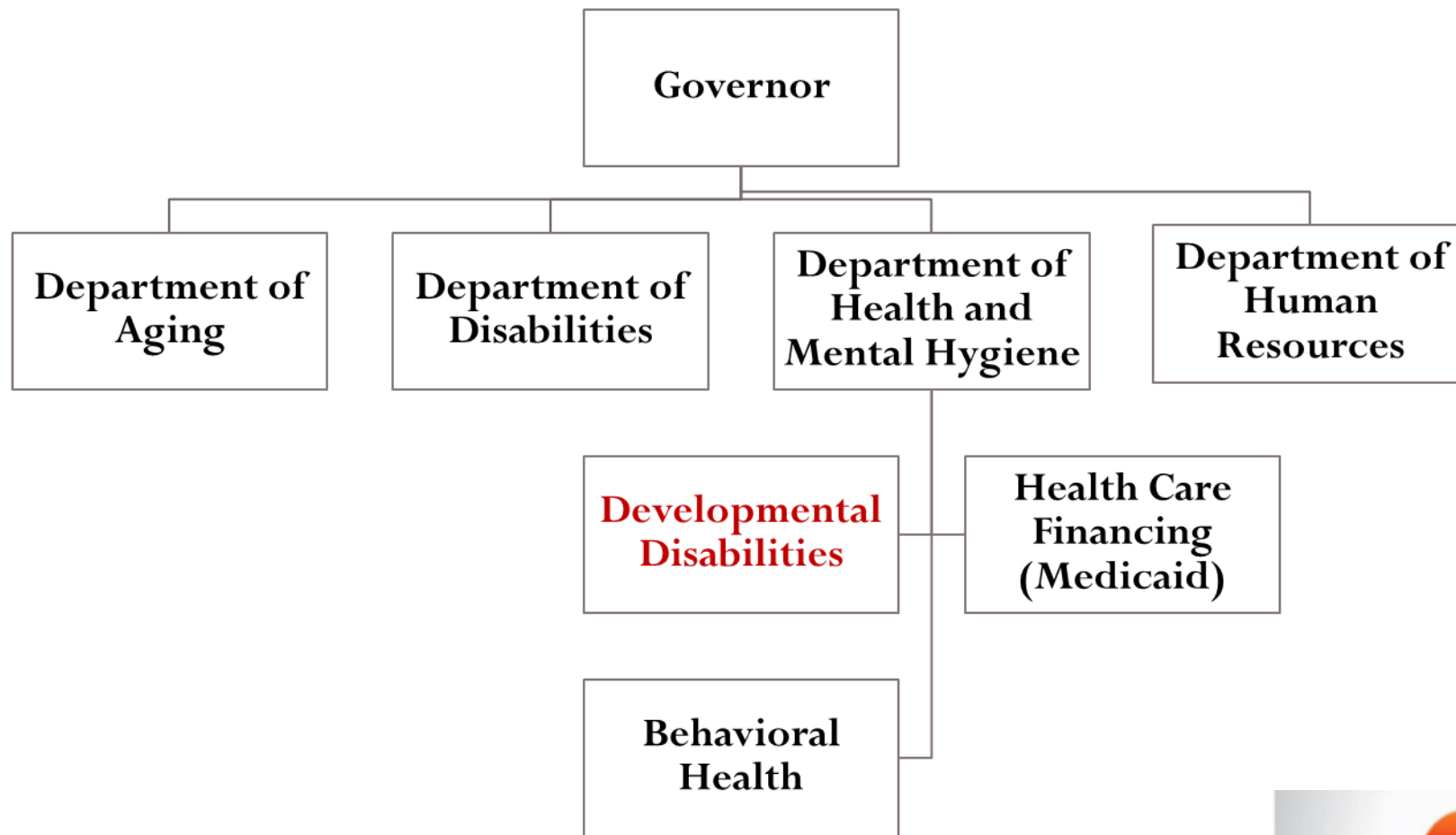
Patricia Sastoque, Deputy Director for Programs

September 21, 2016



The Developmental Disabilities Administration

State administration responsible for service delivery system to support individuals with developmental disabilities.





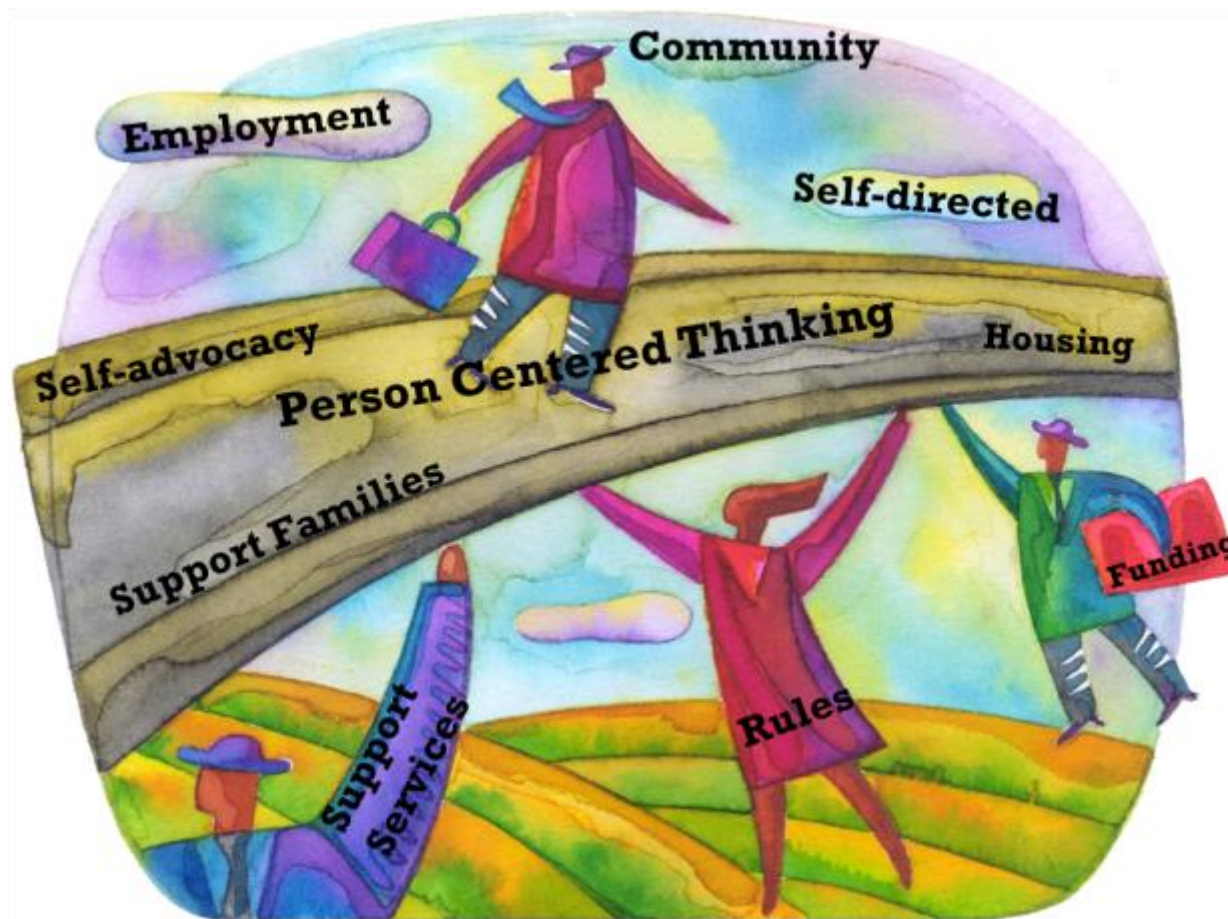
The Developmental Disabilities Administration

- **DDA's Goal** - All Marylander's lead personally defined and fulfilling lives.
- **DDA's Mission** – To provide programmatic leadership in the design and development of services to afford people with developmental disabilities and their families a seamless service system that is responsive the person's needs and personal outcomes.
- **DDA's Vision** - People with developmental disabilities...
 - direct their lives;
 - have viable support options; and,
 - have information to make decisions.



Developmental Disabilities Administration (DDA) Vision Overview.....

People will have full lives in the community of their choice where they are included, participate, and are active citizens.





Guiding Principles

Core Belief: *People with disabilities and their families have the right to live, love, work, play and pursue their life aspirations just as others do in their community.*

supporting positive life trajectories

... preventing negative life events





DDA's Essential Focus Areas for Community Living



 **1st**
Employment

Supported Living
Self-Determination
Self-Advocacy
Supporting Families





DDA Funded Services



Coordination of Community Services
Supported Employment
Day Habilitation
Employment Discovery &
Customization
Community Learning Services



Assistive Technology
Environmental Assessments
and Modifications
Transition Services
Transportation Services
Vehicle Modifications



Residential Habilitation
Personal Supports
Shared Living
Live-In Care Rent



Self Direction Option
Self Advocacy Supports

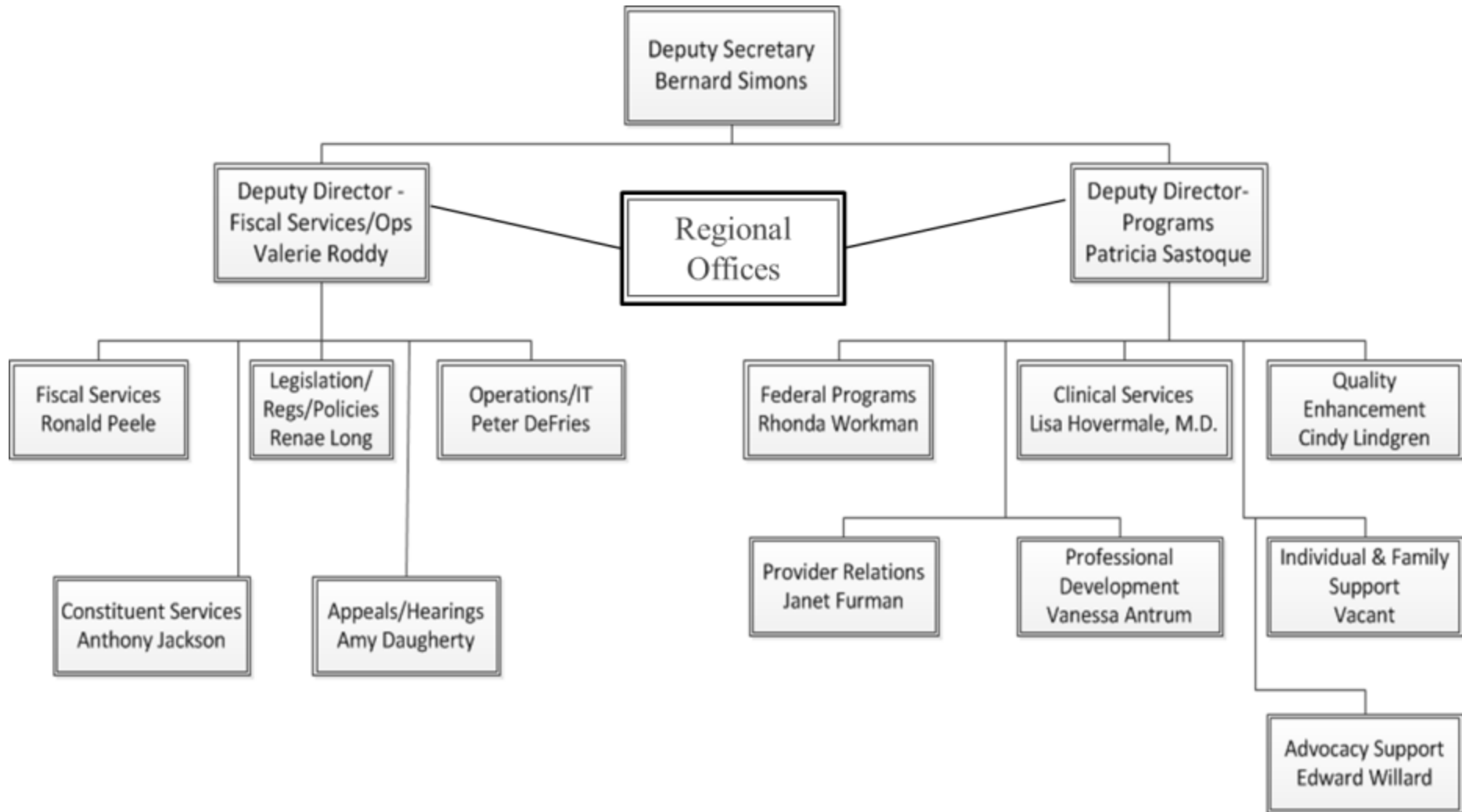


Family Support Services
Individual Support Services
Respite Care Services



Behavior Supports

How is DDA Structured?





How Are DDA Regional Offices Structured?

Regional Office Structure

DDA Headquarters and Regional Office programs structure alignment

**Advocacy
Support**

**Professional
Development**

**Federal
Programs**

**Provider
Relations**

**Quality
Enhancement**

**Individual &
Family Support**

**Clinical
Support**





Who to contact at DDA?

Bernie Simons
Deputy Secretary

Valerie Roddy
Deputy Director of Operations

Patricia Sastoque
Deputy Director of Programs

Regional Offices



SMRO

Judy Pattik
Regional Director
312 Marshall Avenue, Suite
700
Laurel, Maryland 20707
(301) 362-5100

CMRO

Haywood Evans
Regional Director
1401 Severn St, Suite 200
Baltimore, Maryland 21230
(410) 234-8200

ESRO

Kimberly D. Gscheidle
Regional Director
926 Snow Hill Road,
Building 100
Salisbury, MD 21804
(410) 572-5920

WMRO

Cathy L Marshall
Regional Director
1360 Marshall Street
Hagerstown,
Maryland 21740
(301) 791-4670



MARYLAND
DEPARTMENT OF HEALTH
& MENTAL HYGIENE

Together...

We can accomplish our vision and mission so that persons with intellectual and developmental disabilities will have full lives in the communities of their choice where they are included, participate, and are active citizens.





Eligibility and the Waiting List

Presented by
Cristine Marchand, Executive Director,
The Arc Maryland

Joyce Sims, Executive Director,
Resource Connections Inc.



Who is Eligible for Services?

- Eligibility for DD services is defined at a State level. Eligibility can be defined either on the basis of a list of conditions/diagnoses (e.g., ID, ASD, cerebral palsy, etc.) or on a functional assessment basis.
- Most states use a combination of both: functional and specific conditions.

Developmental Disabilities Assistance and Bill of Rights Act of 2000



Definition of Developmental Disability

- A. IN GENERAL. The term “developmental disability” means a severe, chronic disability of an individual that:
1. Is attributable to a mental or physical impairment or combination of mental and physical impairments;
 2. Is manifested before the individual attains age 22;
 3. Is likely to continue indefinitely;
 4. Results in substantial functional limitations in 3 or more of the following areas of major life activity: **i.** Self-care. **ii.** Receptive and expressive language. **iii.** Learning. **iv.** Mobility. **v.** Self-direction. **vi.** Capacity for independent living. **vii.** Economic self-sufficiency.
 5. Reflects the individual’s need for a combination and sequence of special, interdisciplinary, or generic services, individualized supports, or other forms of assistance that are of lifelong or extended duration and are individually planned and coordinated.



Developmental Disabilities Assistance and Bill of Rights Act of 2000

Definition of Developmental Disability

- B. **INFANTS AND YOUNG CHILDREN.** An individual from birth to age 9, inclusive, who has a substantial developmental delay or specific congenital or acquired condition, may be considered to have a developmental disability without meeting 3 or more of the criteria described in (1) through (5) of subparagraph (A) if the individual, without services and supports, has a high probability of meeting those criteria later in life.

Maryland Statute

MARYLAND Code, Health General Art. §7-101

- A. “Developmental disability” means a severe, chronic disability of an individual that:
1. Is attributable to a physical or mental impairment other than the sole diagnosis of mental illness, or to a combination of mental and physical impairments;
 2. Is manifested before the individual becomes 22 years old;
 3. Is likely to continue indefinitely;
 4. Results in an inability to live independently without external support or continuing and regular assistance; and
 5. Reflects the need for a combination and sequence of special, interdisciplinary, or generic care, treatment, or other services that are individually planned and coordinated for the individual.



Maryland Statute

MARYLAND Code, Health General Art. §7-101

“External support” means:

1. Periodic monitoring of the circumstances of an individual with respect to:
 - i. Personal management;
 - ii. Household management; and
 - iii. The use of community resources; and;
2. Rendering appropriate advice or assistance that may be needed.



Maryland Statute

MARYLAND Code, Health General Art. §7-101

“Live independently/Independent Living” means:

1. For **ADULTS**:
 - i. Managing personal care, such as clothing and medication;
 - ii. Managing a household, such as menu planning, food preparation and shopping, essential care of the premises, and budgeting; and
 - iii. Using community resources, such as commercial establishments, transportation, and services of public agencies; or
2. For **MINORS**, functioning in normal settings without the need for supervision or assistance other than supervision or assistance that is age appropriate.

Clearing Up Myths & One Caveat

- The two take-aways from Maryland Statute and accepted evaluation and diagnostic practice:
 - Children regardless of age can be evaluated with valid and reliable tools.
 - Intellectual disability is not an eligibility requirement for DDA-funded services per Maryland law for children or adults.
 - DDA is currently reviewing eligibility regulations and may be proposing changes. The Arc and DD Council will keep you up to date as more is known.

Types of DDA Eligibility

Developmental Disability - “DD-Eligible”

- Severe disability likely to continue indefinitely
- Physical and/or mental impairment, other than sole diagnosis of mental illness
- Documented to occur before age 22
- External support, assistance, and specialized services required to live independently

Supports Only “SO-Eligible”

- Severe disability likely to continue indefinitely
- Physical and/or mental impairment, other than sole diagnosis of mental illness

Services Related to DDA Eligibility

- Eligibility does not mean services are authorized
 - ▶ Funding for services determined by State legislature
- SO- Eligible
 - ▶ Individual Support Services (ISS) and Family Support Services (FSS)
 - ▶ Ex: respite care, transportation, environmental modification, adaptive equipment,
 - ▶ Other State waivers relative to eligibility criteria
- DD-Eligible
 - ▶ Community Pathways Waiver
 - ▶ Need-based
 - ▶ Transitioning Youth - designated category to receive day services



Waiting List Priority Categories

- **Category I – Crisis Resolution:**

Homeless, serious risk of physical harm, serious risk of causing physical harm, or caregiver's impaired health prevents proper care.

- **Category II – Crisis Prevention:**

Substantial risk for meeting Crisis Resolution criteria within one year.

- **Category III – Current Request:**

Has a current need for services; does not qualify under other priority categories. Date of application determines access to services when funding made available by the legislature.

Crisis Resolution



- **Criteria:**

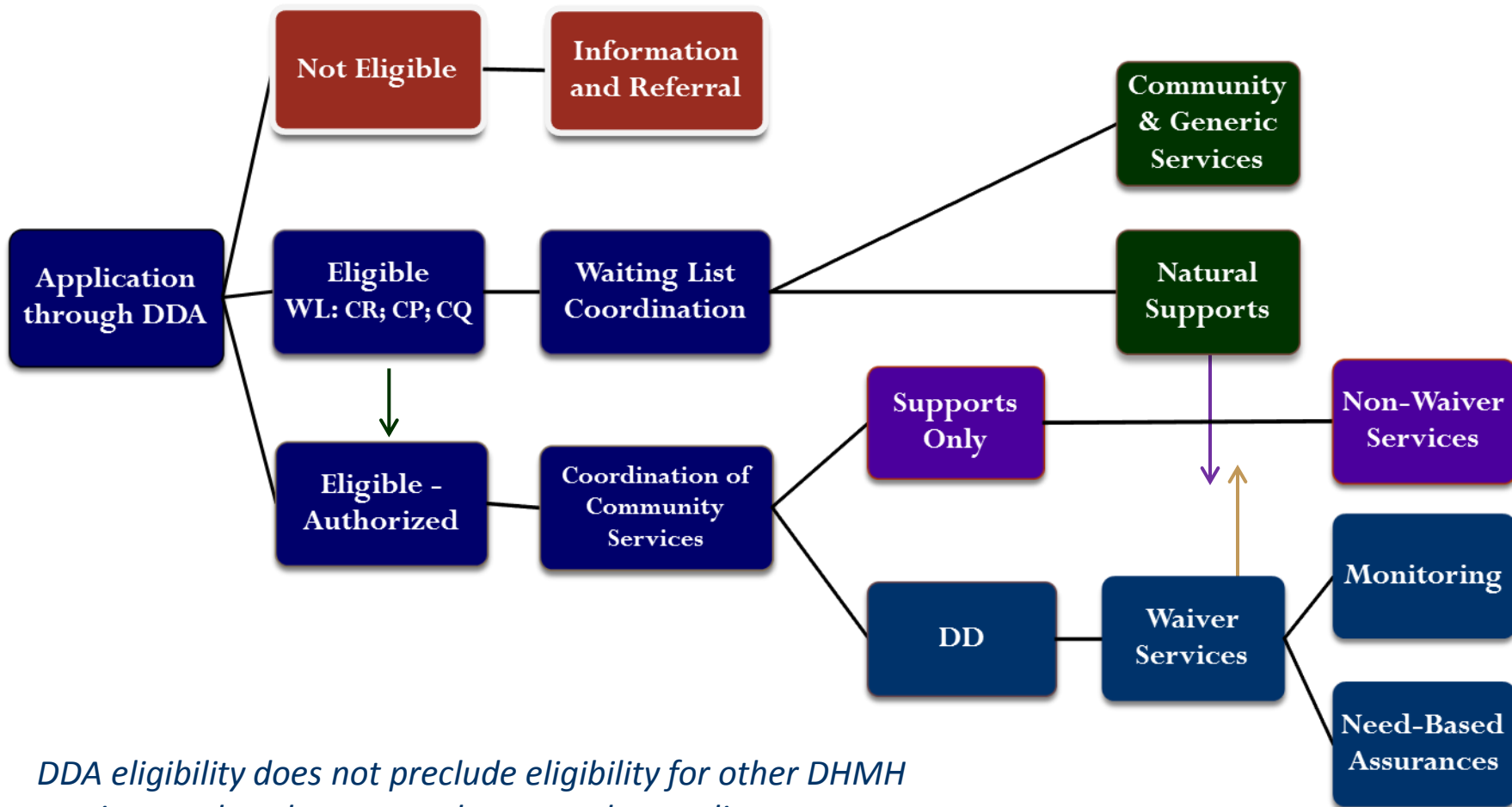
- Homeless or temporary housing with clear time-limit
- Serious risk of physical harm in current environment
- Serious risk of causing physical harm to others in current environment
- Caregiver unable to provide adequate care due to impaired health...may place applicant at risk of serious physical harm.

- **Evidence:**

- Recent severe injuries due to the behavior of others
- Recent victim of sexual abuse
- Neglected; serious risk of injuries*
- Engages in self-injurious behavior with risk of sustaining injuries*
- Serious risk of injuries* due to the physical surroundings

**(life threatening or substantially impair functioning)*

Access & Community Coordination Services



DDA eligibility does not preclude eligibility for other DHMH services; rather they are each accessed according to individual need so appropriate specialized services are provided in most cost-effective manner.

Coordination of Community Services (CCS)

- Eligibility Assistance
- Waiting List Coordination
- Waiver Enrollment
- Community Coordination
 - Authorized for DDA-Funded Services



Eligibility Assistance

1. Contact DDA Regional Office
2. Written application
3. Random assignment to CCS agency for “Comprehensive Assessment”
 - Personal interview
 - Secure documentation of disability from applicant
 - Psychological/cognitive testing
 - Evaluations from licensed clinicians
 - Prepare & submit report to DDA Regional Office



DDA makes determination of Eligibility

Waiting List Coordination

- Crisis Resolution
- Crisis Prevention
- Current Request
- Primary:
 - Develop a plan of action
 - Connect to community resources and other State programs



Transitioning Youth - TY

The Governor's Transitioning Youth Initiative allows DDA and DORS to fund employment/day services for eligible* graduating students who might otherwise not have received DDA services.

- Special education services = entitlement to end of school year in which student turns 21
- Person with a developmental disability as defined in regulation/DDA*
 - Eligible from 21st to 22nd birthday
 - Specially dedicated funds
 - Re-authorized each year by legislature
- Employment or day service only
- DDA - NOT an entitlement!
 - Based on eligibility and limited funding allocation



Timeline – Transitioning Youth

Age 14-16

- Apply for DDA services/eligibility

Age 18

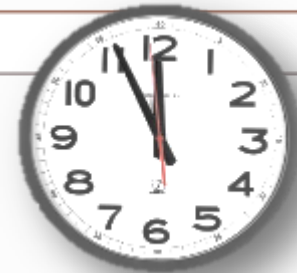
- Apply for SSI and MA - required for DDA funding
- Apply for MetroAccess

2 years before exit

- Fall – Apply for DORS
- Spring/Summer – Begin search for service provider

Final year of school

- Sep – Look for Choice Letter from DDA
(to select top 3 if choosing DDA adult services)
- Oct – Mail or fax Choice Letter to CCS
- Dec-Jan – SFP's developed & submitted
- Mar – Complete the Waiver enrollment process



Options for Transitioning Youth

- ✓ Supported Employment
- ✓ Employment Discovery & Customization
- ✓ Day Habilitation
- ✓ Medical Day Care
- ✓ Community Learning Service
- ✓ Self-Directed Options



Waiver Enrollment

- Medicaid eligibility
- **Required for DDA & other State funded services**
 - Community Pathways
 - Self-Direction is an option!
- Some need to re-enroll annually (“redet”)



Start Getting Ready!

- ✓ Apply for DDA eligibility
 - ✓ Gather all records (IEP's; professional evaluations; medical records)
- ✓ Apply for Medicaid
 - ✓ Required for DDA/other State services
- ✓ Apply for SSI benefits
- ✓ Apply for DORS
- ✓ Apply for Paratransit services
- ✓ Keep your Coordinator informed



More Information

Cristine Marchand – cmarchand@thearcmd.org

Joyce Sims – jsims@resconnect.org



The Arc Maryland

<http://thearcmd.org/>

Maryland Developmental Disabilities Council

<http://www.md-council.org/>

Maryland Developmental Disabilities Administration

<http://dda.dhmh.maryland.gov/pages/Home.aspx>

Resource Connections Inc – Resources

<http://resconnect.org/connections>

Q & A with Presenters

Submit questions via the questions panel

Emails provided below for more specific questions based on your unique circumstance.



Patricia Sastoque

Deputy Director of Programs, The Developmental Disabilities Administration

patricia.sastoque@maryland.gov



Cristy Marchand

Executive Director, The Arc Maryland

cmarchand@thearcmd.org



Joyce Sims

Executive Director, Resource Connections

jsims@resconnect.org

Presenter Biographies

Patricia Sastoque



Patricia Sastoque is the Deputy Director for Programs at the Developmental Disabilities Administration (DDA), responsible for management and oversight of all program supports. After starting her career as a direct support professional, she has held various positions in Louisiana, the District of Columbia, and Maryland. Mrs. Sastoque's experience includes Person-Centered and Personal Outcomes; quality enhancement; community based residential services; and transition from institutions to community based services. ***"I look forward to applying my varied experience as DDA transforms to a more person-centered service delivery system that integrates best practices, resulting in people with developmental disabilities living fully integrated and meaningful lives."***

Cristy Marchand



An advocate for disability rights, Cristy currently serves as Executive Director of The Arc Maryland, the largest statewide nonprofit organization dedicated to the rights and quality of life of children and adults with intellectual and developmental disabilities. After serving as Executive Director of The Arc Maryland for over 20 years she moved to New Mexico as Executive Director of Family Voices, a national family-led organization with local affiliates dedicated to health care of children and youth with special health care needs. She recently returned to Maryland. Cristy has over 30 years' experience in positions of leadership at the public and private levels in public policy and disability rights advocacy, association management, and program development in the field of developmental disabilities. ***"I am driven and inspired by the courage of people with intellectual and developmental disabilities and their families and believe this is what makes systems change happen."***

Joyce Sims



Joyce Sims has been the Executive Director for Resource Connections Inc. since 2010, having served as Program Director for the prior 4 years. With over 30 years in human services, she has performed in various capacities starting out in direct support then moving to program management and quality assurance in provider services, before moving to Coordination of Community Services. ***"I always put myself in the position of the family members we work with-- I am committed to doing whatever I can to promote the same service delivery I would want for my own family."***